

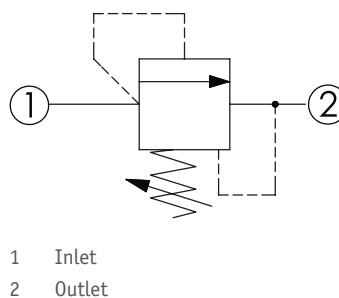
CRD-16A - Relief valve

Direct acting, poppet

1 Available versions

Ordering example:

CRD-16A	-25	-A	-L
Type	Operation	Pressure setting	Option



Operation

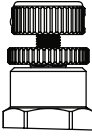
Coding	Description
25	Direct acting port 1 to 2 (P to T)

Pressure setting

Coding	Pressure (bar)	
	Adjustment range	Standard setting
A	35 - 210	70
B	20 - 105	70
C	70 - 420	70
D	14 - 55	28
E	7 - 28	14
S	3.5 - 14	7
W	55 - 315	70

Option

Coding	Option	Drawing
L	Leakproof hex. socket screw	
LP	Leakproof hex. socket screw, with stainless steel external metal components	

Coding	Option	Drawing
K	Handknob with lock knob	

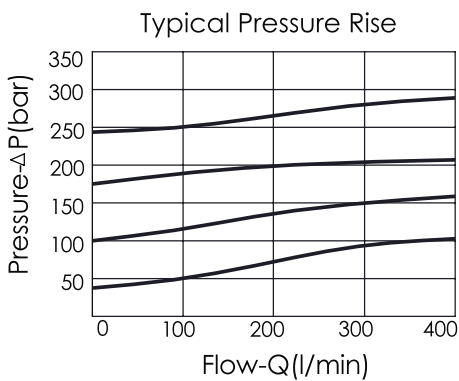
2 Technical data

Operating pressure p_{max}	350 bar
Flow rate Q_{max}	380 l/min
Installation torque	200 - 215 Nm
Cavity	T-16A
Weight	0.68 kg

i INFORMATION

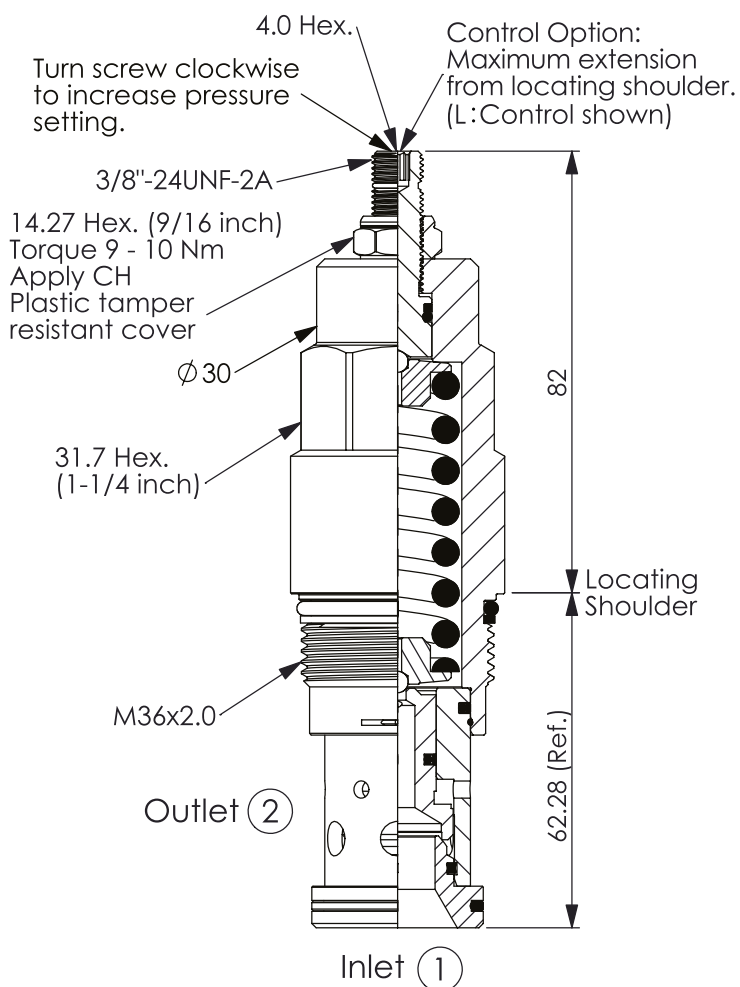
- Will accept maximum pressure at port 2; suitable for use in cross port relief circuits.
- Response time-typical (2 ms)
- Maximum leakage approximately (5 drops/min to 85 % of nominal setting)
- Dirt tolerant

Characteristic lines



3 Dimensions

All dimensions in mm, subject to change.



4 Other information

see [Technical information HAWE cartridge valves: D 8219](#)

see [Recommendation for hydraulic fluid: D 5488/1](#)

